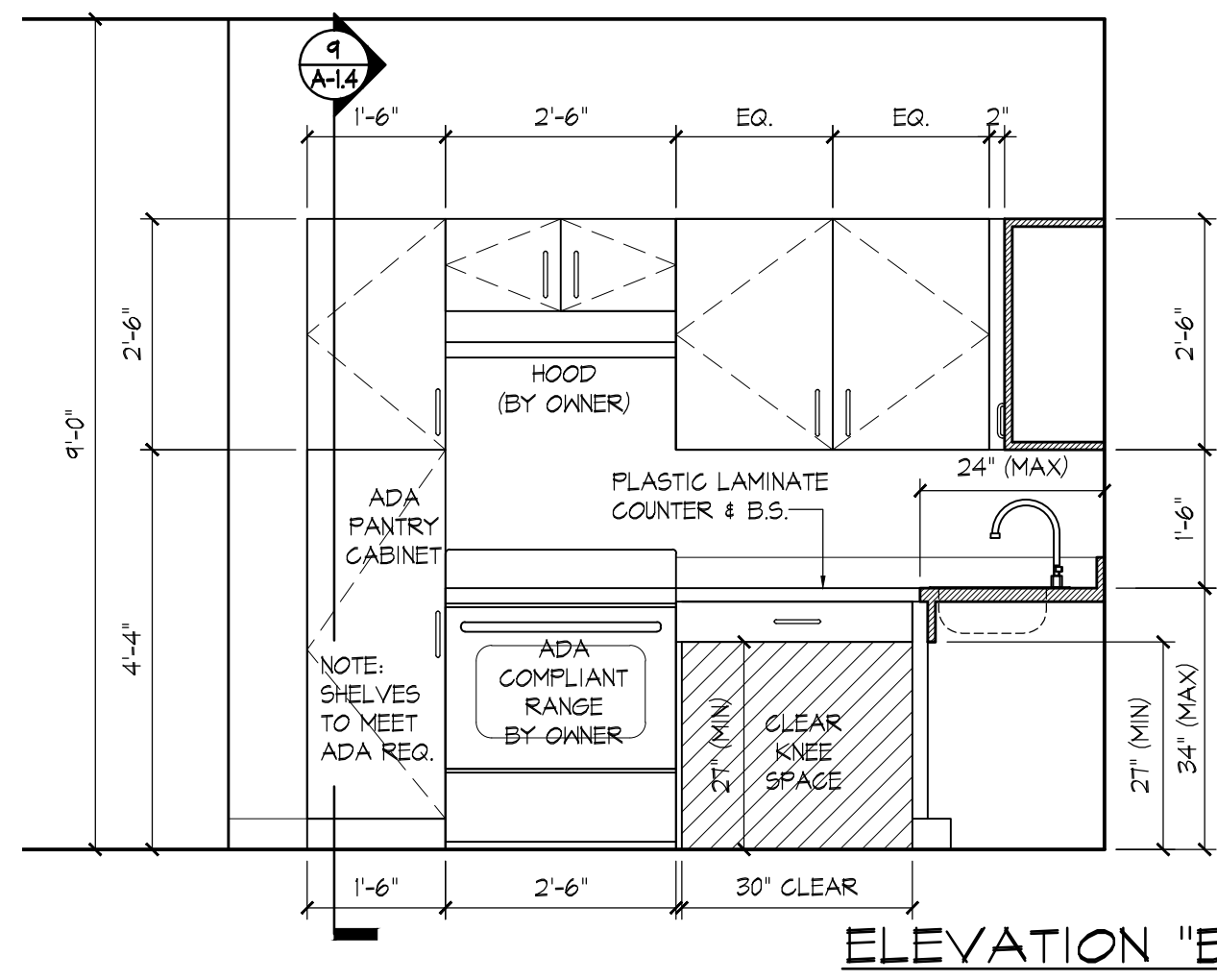
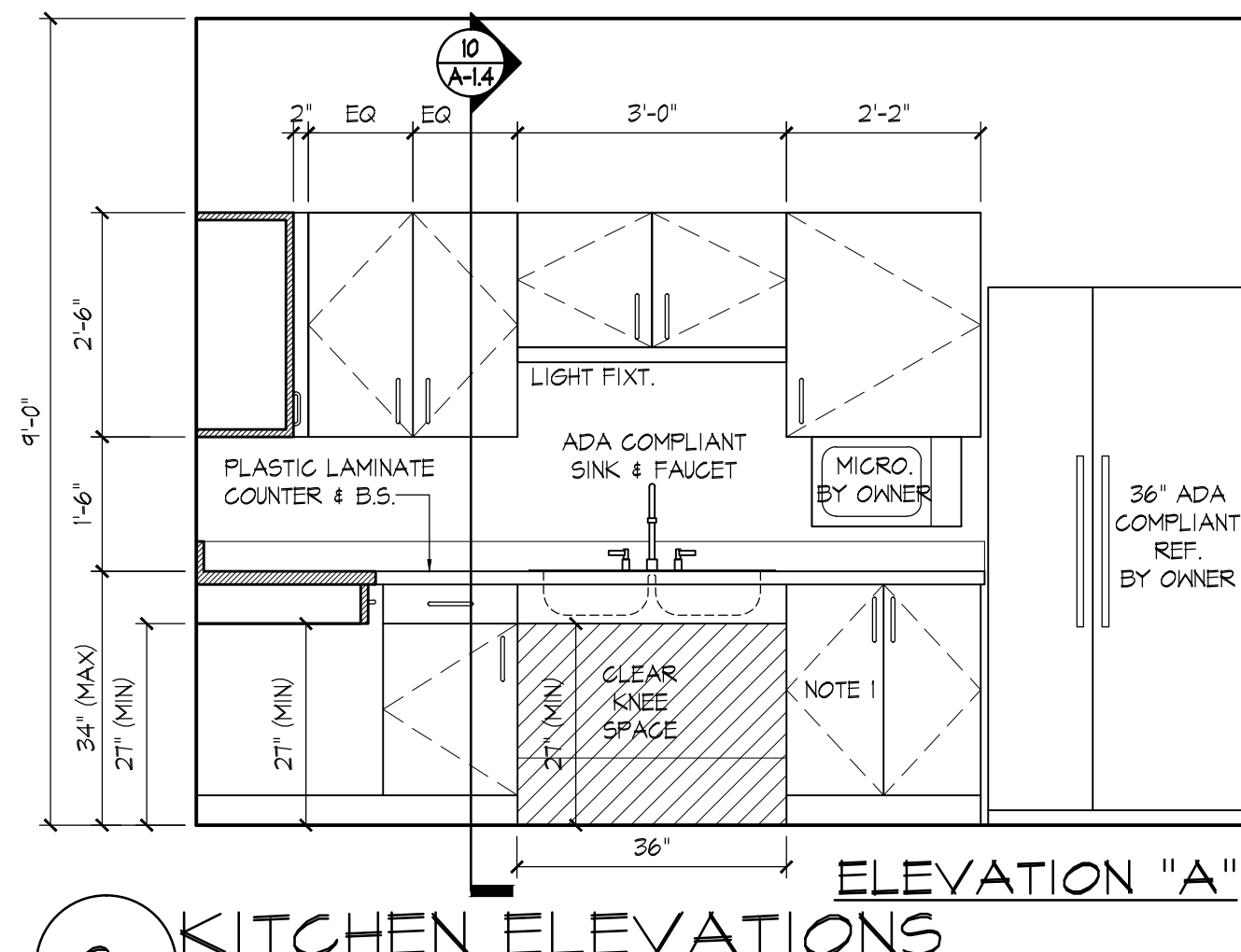


P:\2014\14-190-000 Henrietta EMS and Library\CD's\X-plan 09.23.2014.dwg, Plotted: Oct 07, 2014 - 11:01am



ELEVATION "B"

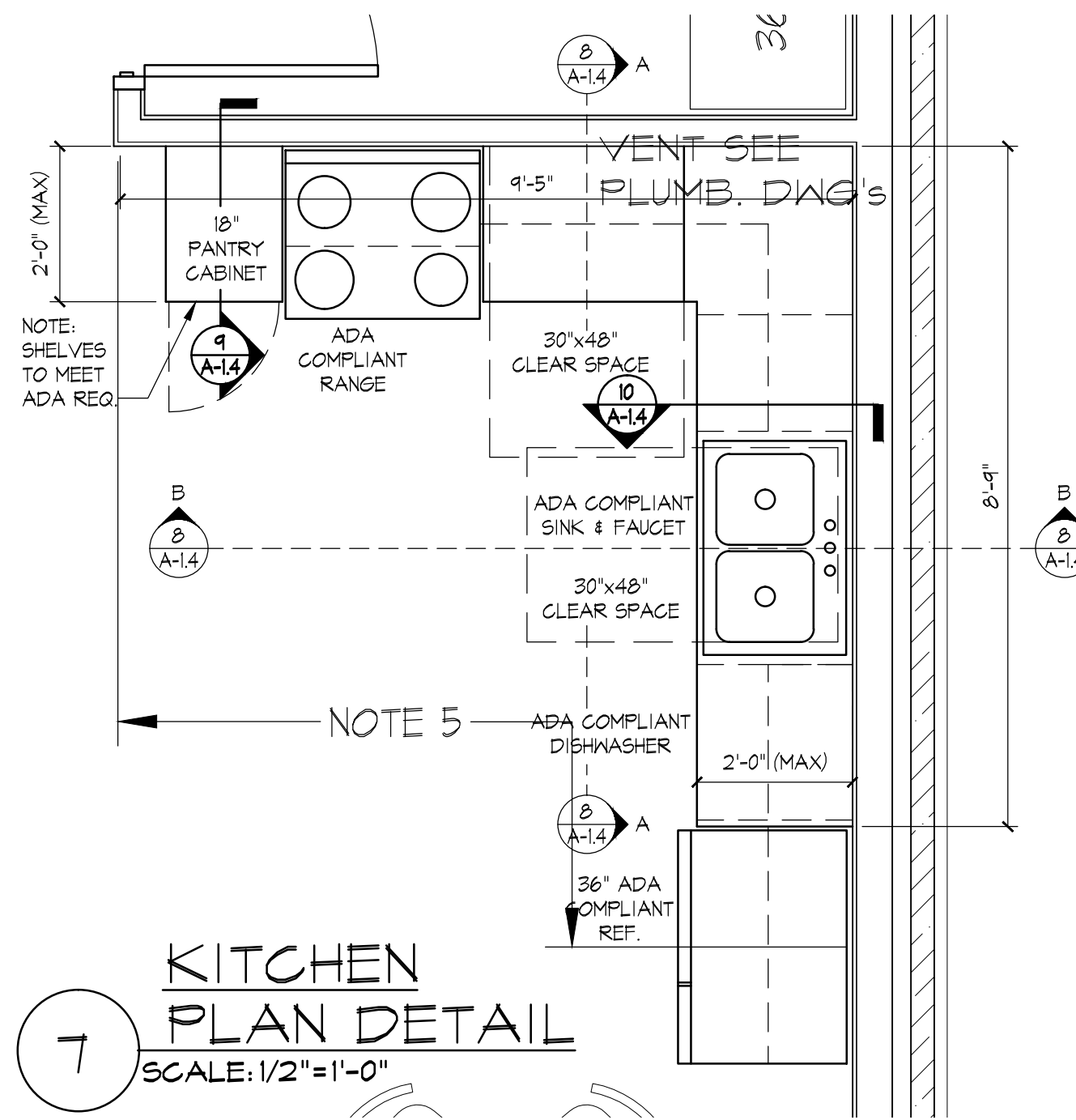


ELEVATION "A"

8 KITCHEN ELEVATIONS
SCALE: 1/2"=1'-0"

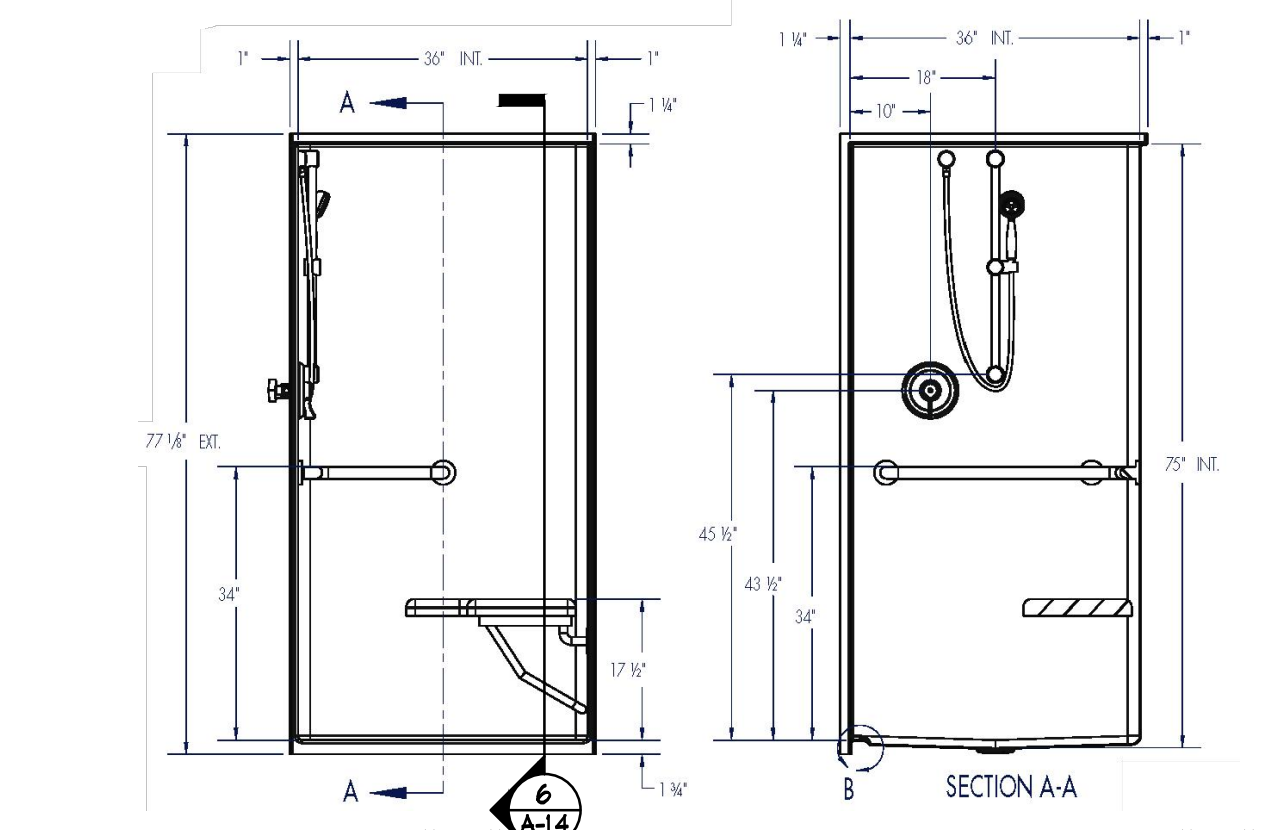
MARK	LOCATION	DESCRIPTION
TA-01	RM. 110, 113	24" TOWEL BAR. B-530-18
TA-03	RM. 110, 113	RECESSED CABINET w/ MIRROR. B-347
TA-05	RM. 110, 113	18" VERTICAL GRAB BAR. B-5806.99
TA-06	RM. 110, 113	36" GRAB BAR. B-5806.99
TA-07	RM. 110, 113	42" GRAB BAR. B-5806.99
TA-08	RM. 110, 113	DOUBLE TOILET PAPER DISPENSER. B-6867

NOTES:
1. TOILET ACCESSORIES LISTED ARE BOBRICK. USE APPROPRIATE BOBRICK ANCHOR PLATES AS SPECIFIED BY MANUFACTURER.
2. ALL TOILET ACCESSORIES SHALL BE LOCATED AND MOUNTED TO MEET ALL REQUIREMENTS OF THE ADA AND ALL LOCAL HANDICAPPED CODE REQUIREMENTS.



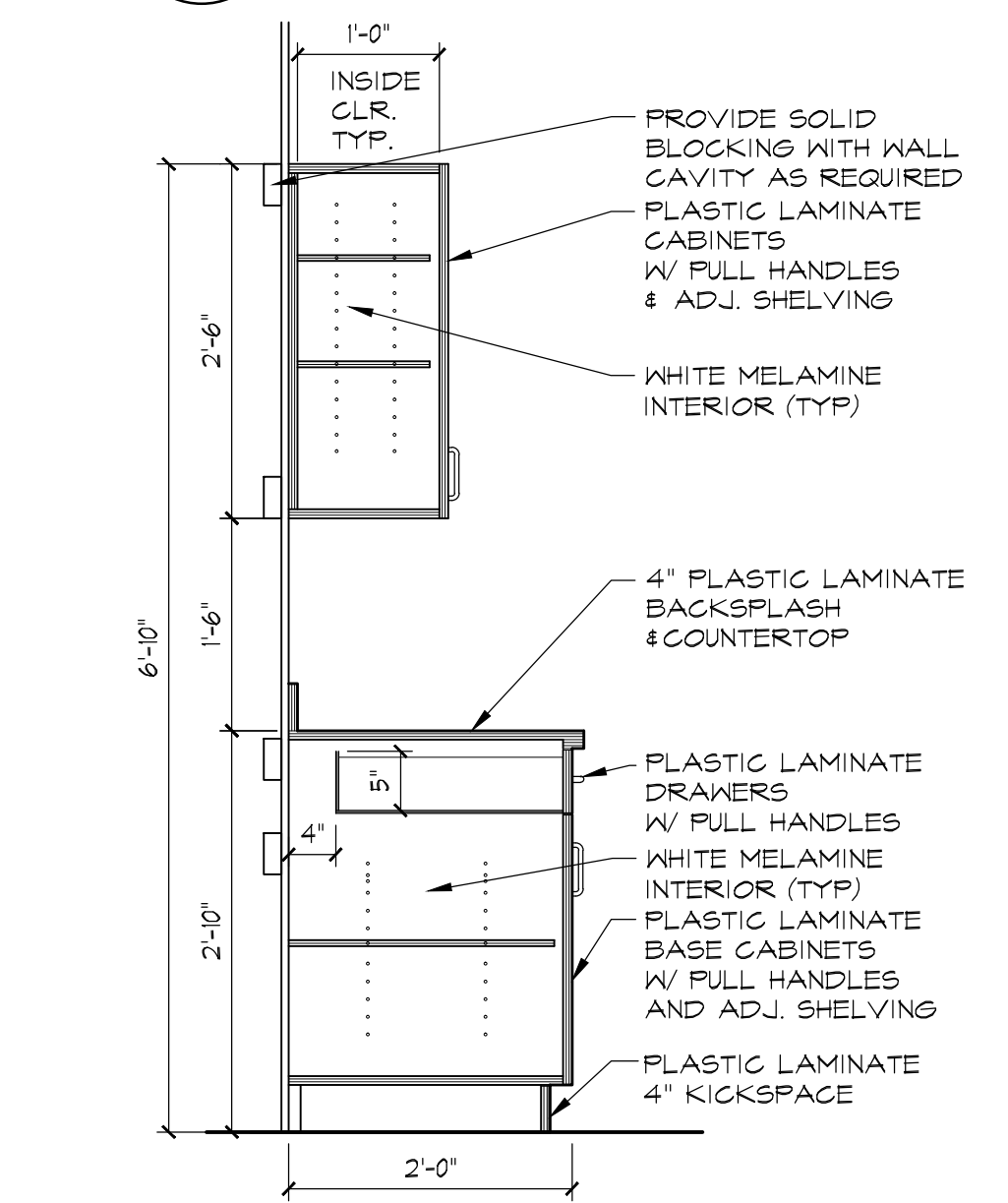
7 KITCHEN PLAN DETAIL
SCALE: 1/2"=1'-0"

ADA SHOWER ELEVATION NOTE:
ELEVATIONS SHOWN ARE FOR ADA REFERENCE PURPOSES ONLY. VERIFY EXACT ADA PRE-MANUF. SHOWER w/ PLUMBING DWG'S

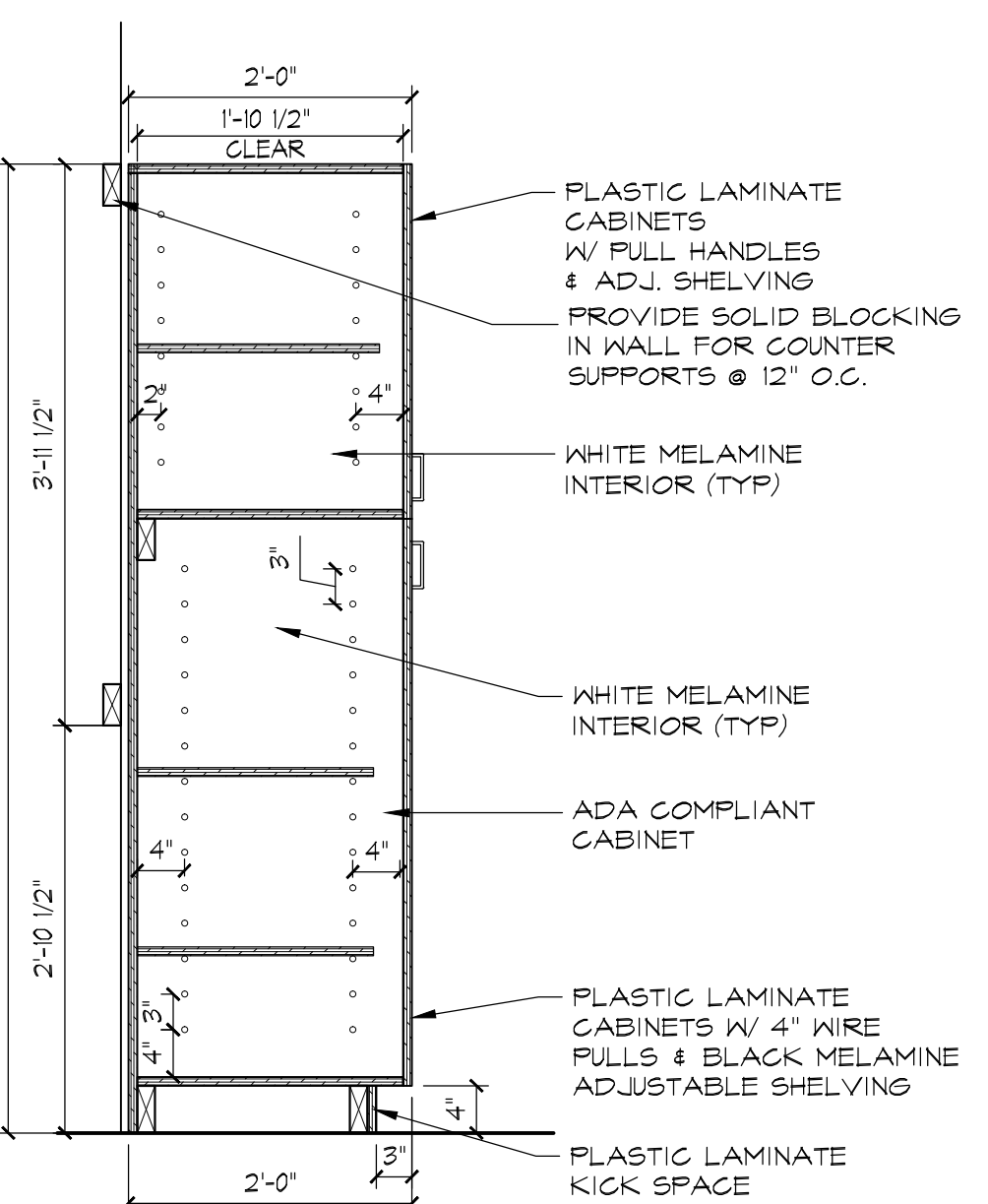


ELEVATION "A" ELEVATION "B"

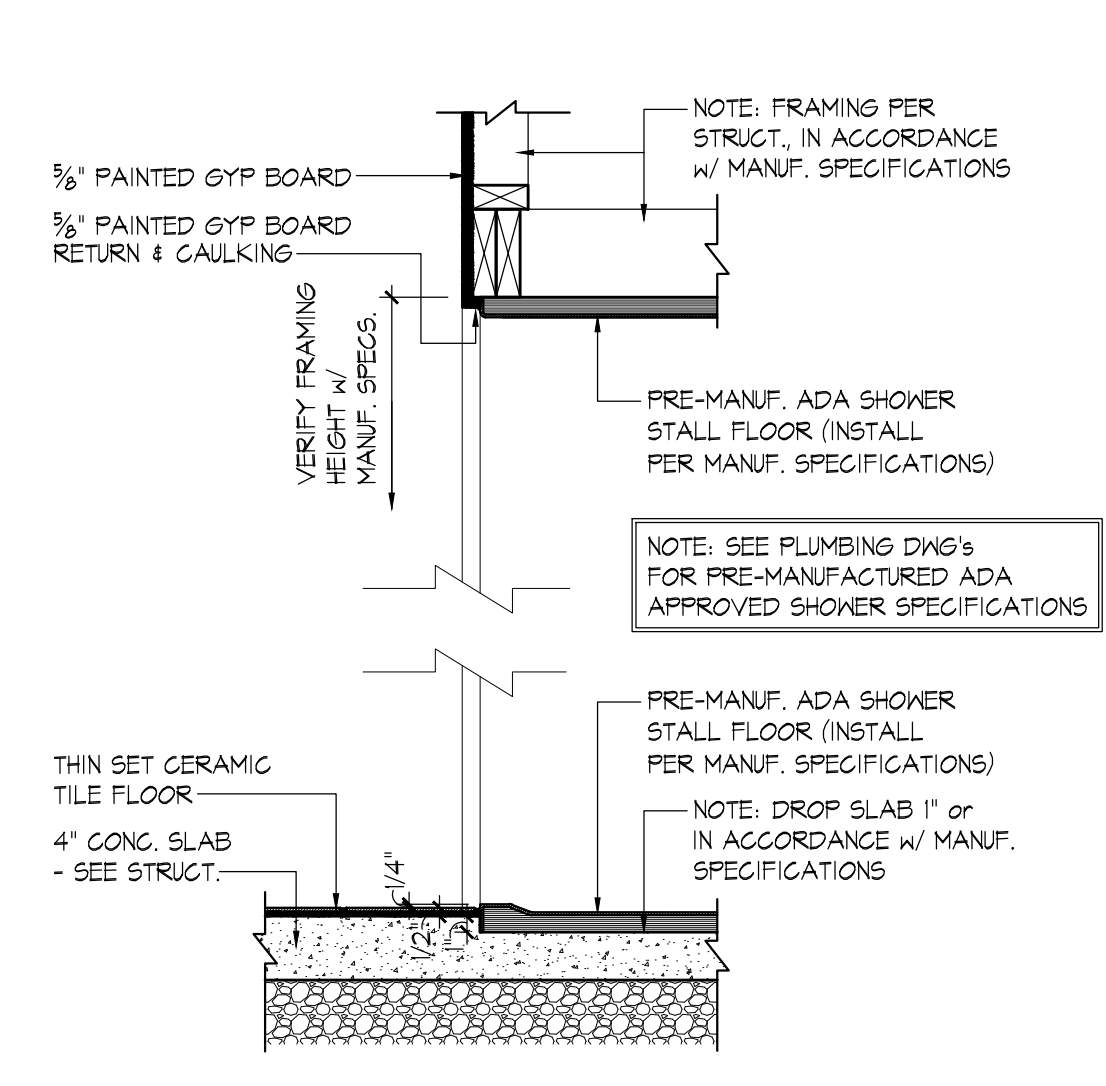
11 PRE-MANUFACTURED ADA SHOWER ELEVATION
SCALE: 1/2"=1'-0"



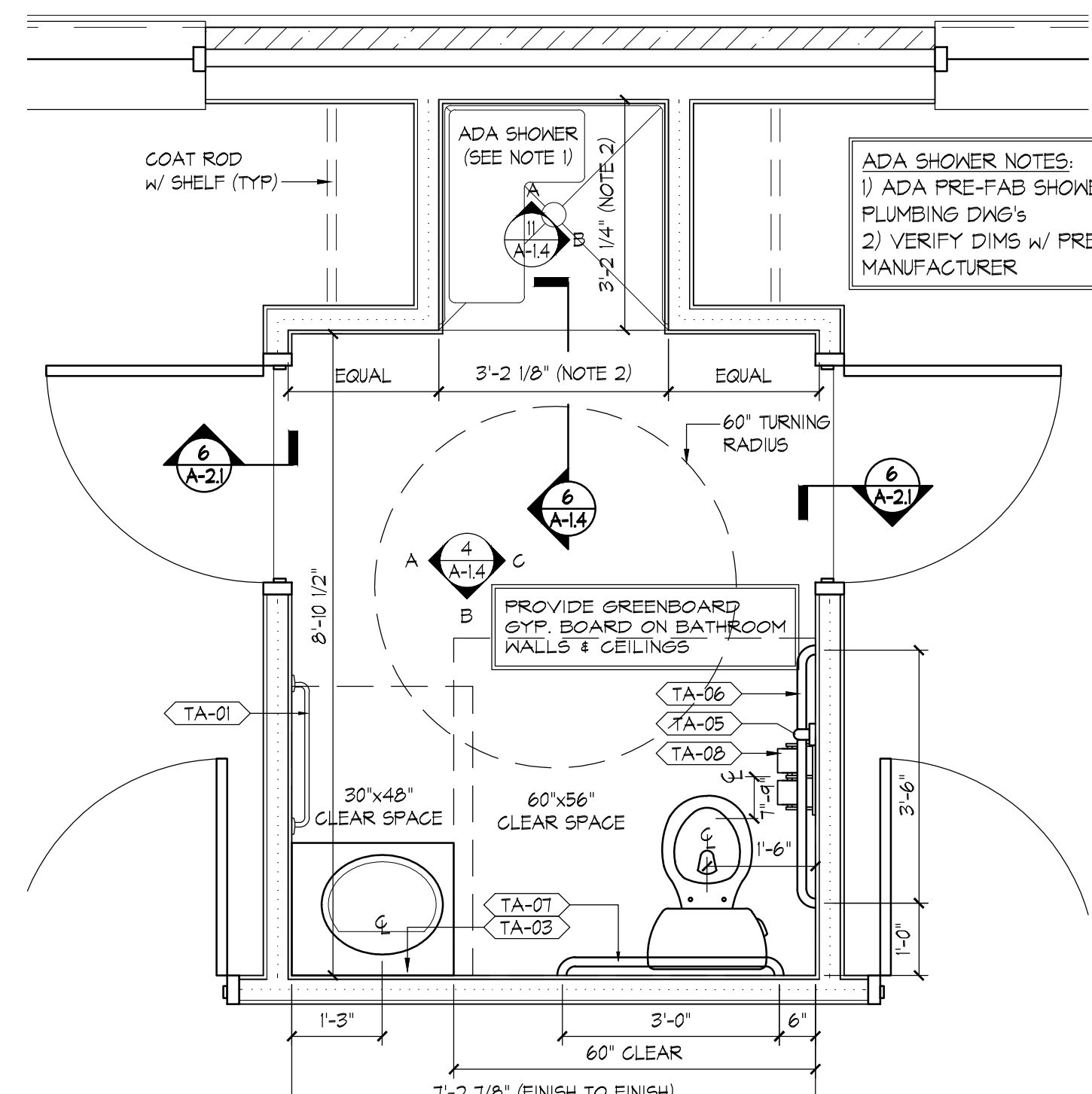
10 KITCHEN DETAIL
SCALE: 1"=1'-0"



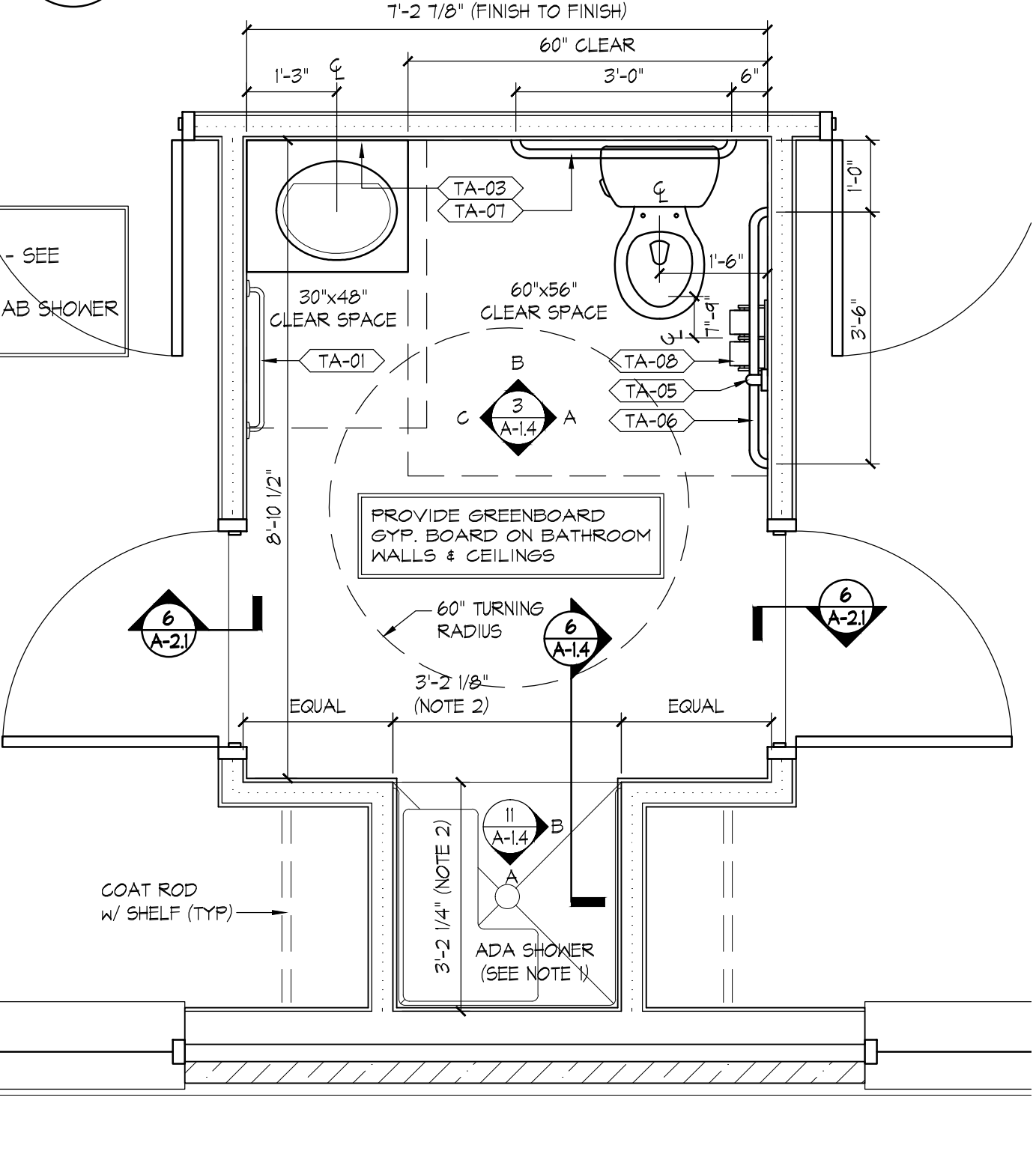
9 KITCHEN DETAIL
SCALE: 1"=1'-0"



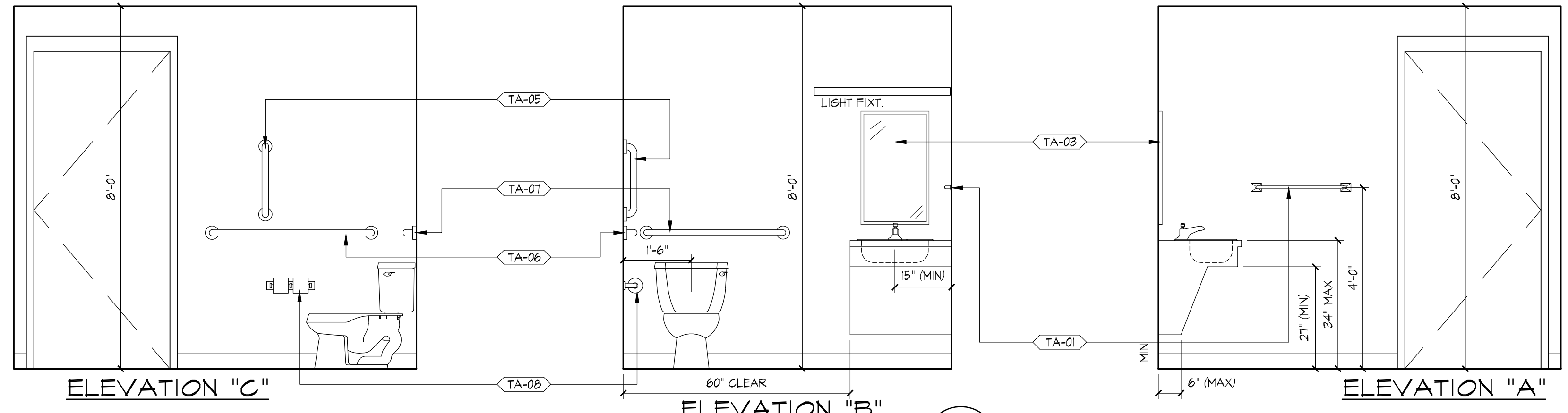
6 PRE-MANUFACTURED ADA SHOWER DETAIL
SCALE: 1"=1'-0"



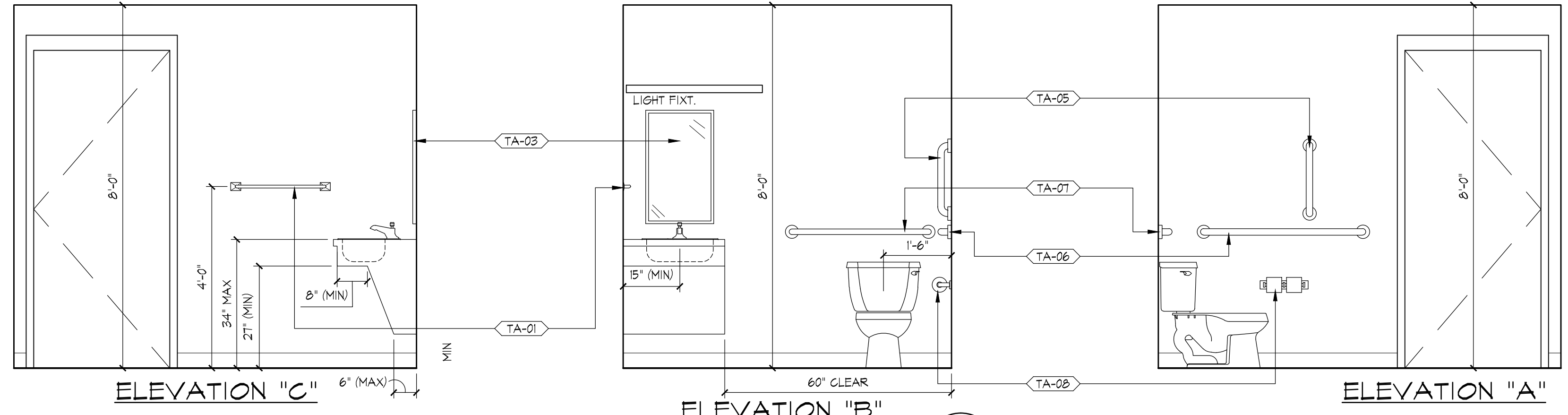
2 BATHROOM #110 PLAN DETAIL
SCALE: 1/2"=1'-0"



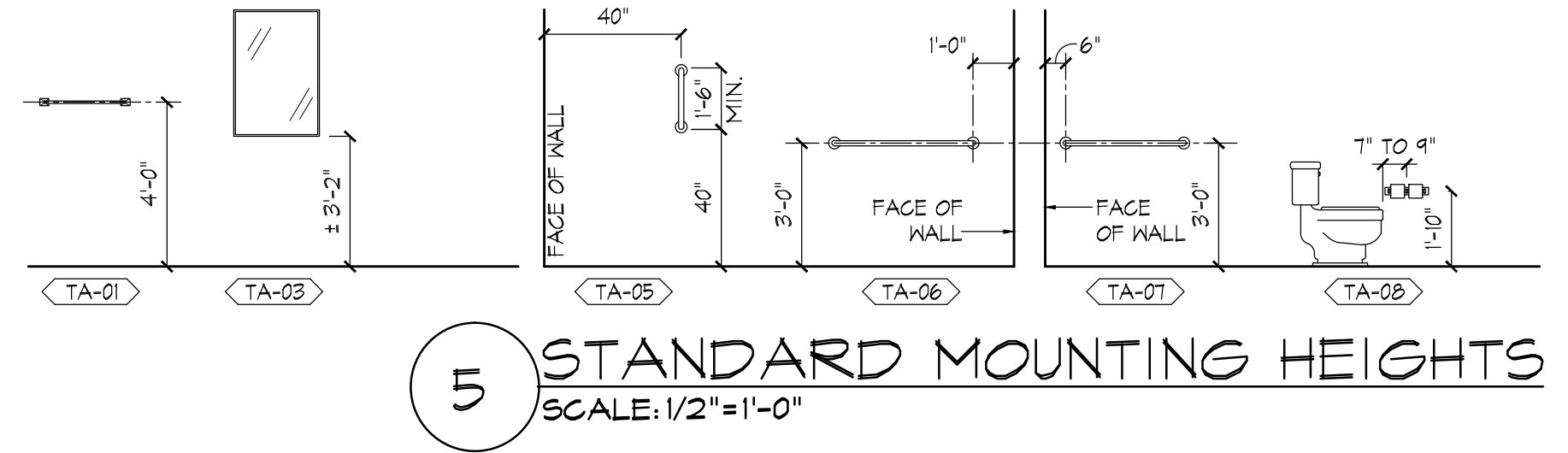
1 BATHROOM #113 PLAN DETAIL
SCALE: 1/2"=1'-0"



4 BATHROOM #110 ELEVATIONS
SCALE: 1/2"=1'-0"



3 BATHROOM #113 ELEVATIONS
SCALE: 1/2"=1'-0"



5 STANDARD MOUNTING HEIGHTS
SCALE: 1/2"=1'-0"

SOUTHEASTERN EMS
NEW SOUTHEASTERN EMS
FOR
RUTHERFORD COUNTY

ISSUE DATE: 10-7-14
REVISION 1: --
REVISION 2: --
REVISION 3: --
REVISION 4: --

PROJECT #: --
CONTENT: BATHROOM
PLAN & ELEV. DETAILS

PROJECT ARCHITECT: --
DRAWN BY: INITIALS

CADD FILE NAME: --
THIS DRAWING AND THE DESIGN SHOWN ARE THE PROPERTY OF ESD. THE REPRODUCTION, OR USE OF THIS DRAWING WITHOUT THEIR WRITTEN CONSENT IS PROHIBITED. ANY INFRINGEMENT IS SUBJECT TO LEGAL ACTION.

Sheet
A-1.4

ESD
architecture • interior design
1300 South Mint Street, Suite 300, Charlotte, NC 28203
Email: esd@esdarch.com • Fax: 704-373-0902 • Phone: 704-373-1900