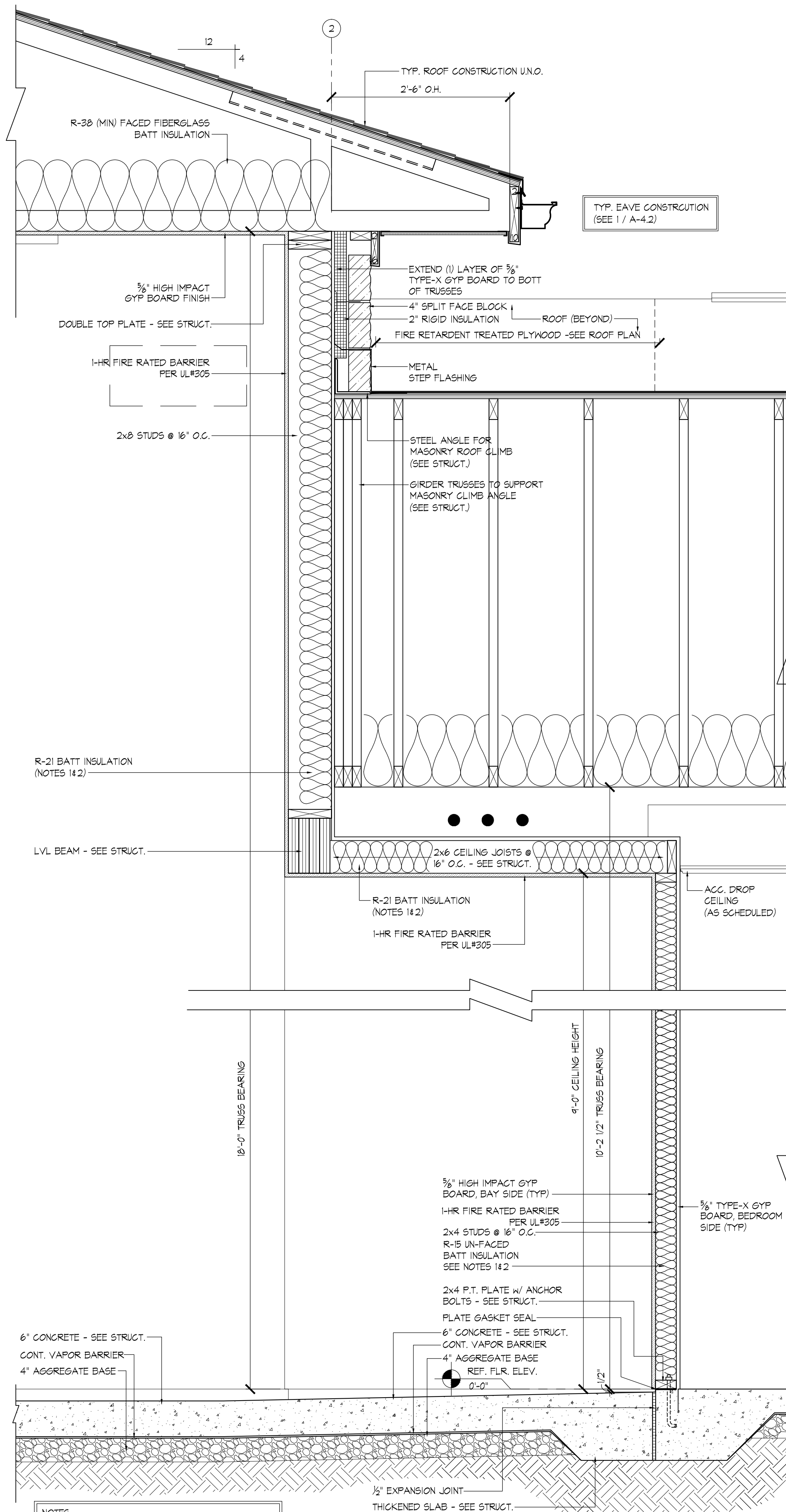
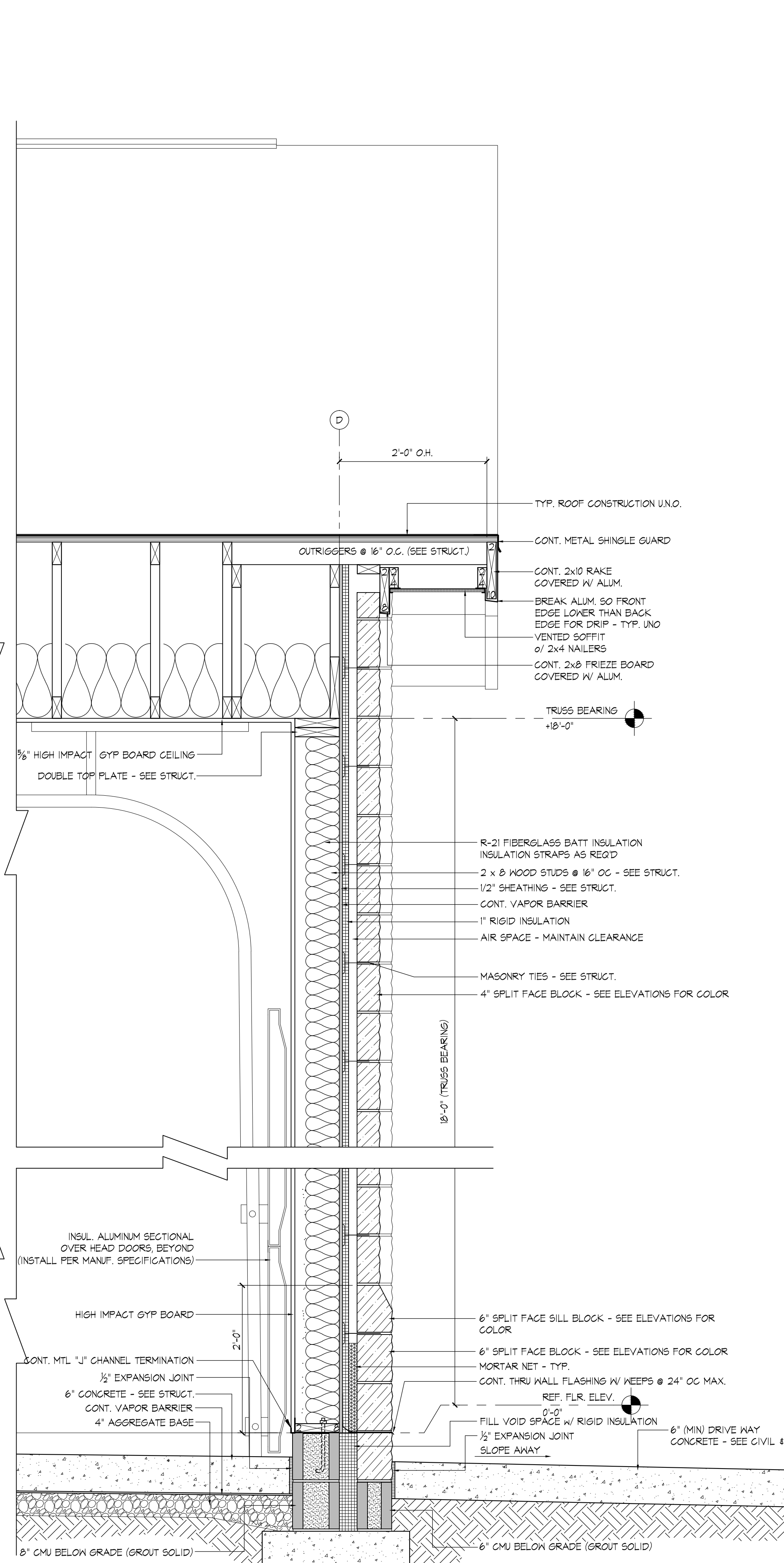


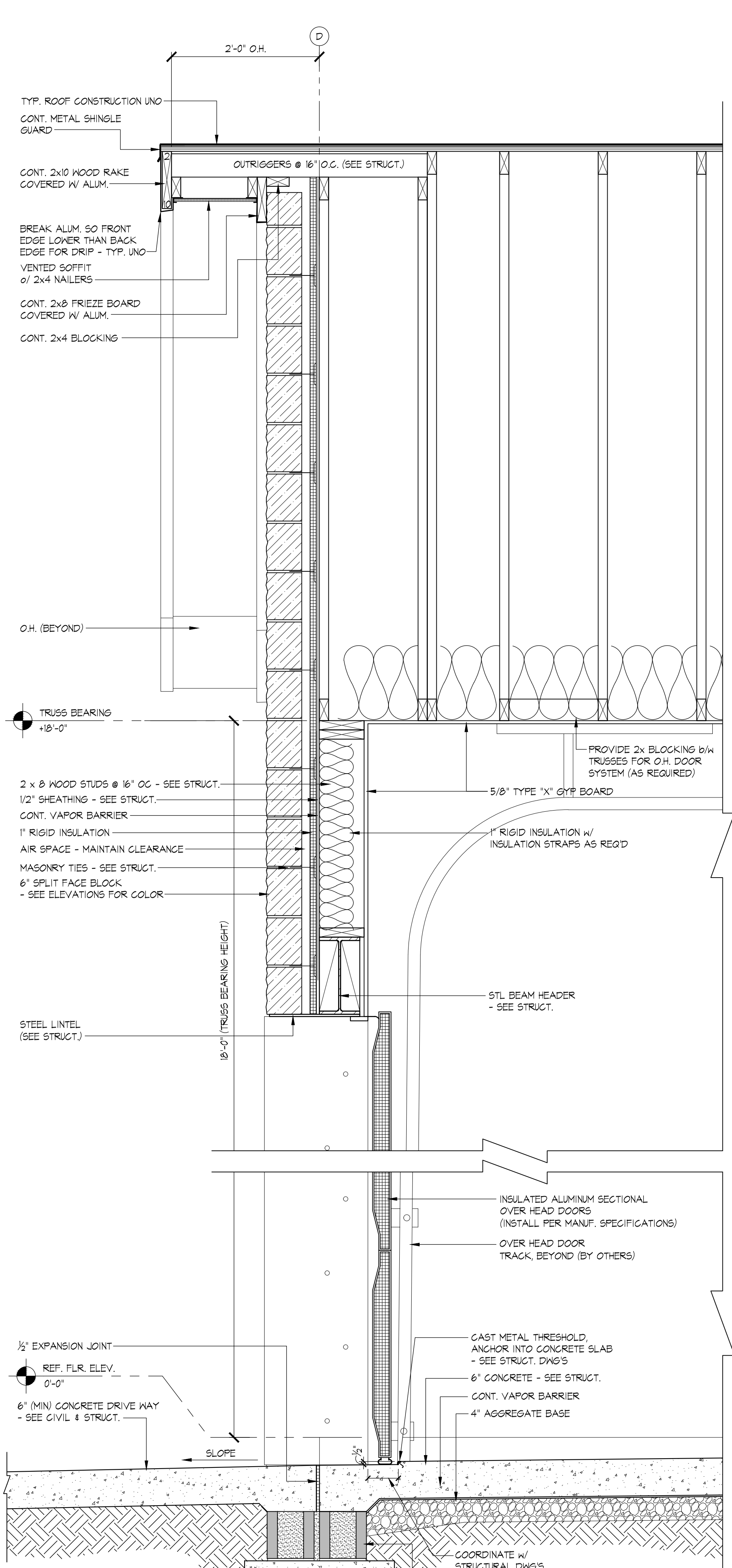
P:\2014\14-190-000 Henrietta EMS and Library\CD's\A-4.1, 4.2, 4.3.dwg, Plotted By: sponder, Plotted: Oct 07, 2014 - 11:30am



3 DETAIL SECTION
SCALE: 1"=1'-0"



2 DETAIL SECTION
SCALE: 1"=1'-0"



1 DETAIL SECTION
SCALE: 1"=1'-0"

NOTES:
1) BATT INSULATION b/w CONDITIONED SPACE & BAY AREA SHALL HAVE PAPER FACE ON BEDROOM SIDE.
2) PROVIDE CONTINUOUS UNINTERRUPTED INSULATION ENVELOPE b/w BAY AREA & REST OF BUILDING



SOUTHEASTERN EMS
NEW SOUTHEASTERN EMS
FOR
RUTHERFORD COUNTY

ISSUE DATE: 10-7-2014
REVISION 1: --
REVISION 2: --
REVISION 3: --
REVISION 4: --
PROJECT #: --
CONTENT: **DETAIL SECTIONS**
PROJECT ARCHITECT: 14-190-000
DRAWN BY: SJP
CADD FILE NAME:
THIS DRAWING AND THE DESIGN SHOWN ARE THE PROPERTY OF ESD. THE REPRODUCTION, OR USE OF THIS DRAWING WITHOUT THEIR WRITTEN CONSENT IS PROHIBITED. ANY INFRINGEMENT IS SUBJECT TO LEGAL ACTION.
Sheet
A-4.3

1300 South Mint Street, Suite 300, Charlotte, NC 28203
Email: esd@esdarch.com • Fax: 704-373-0902 • Phone: 704-373-1900