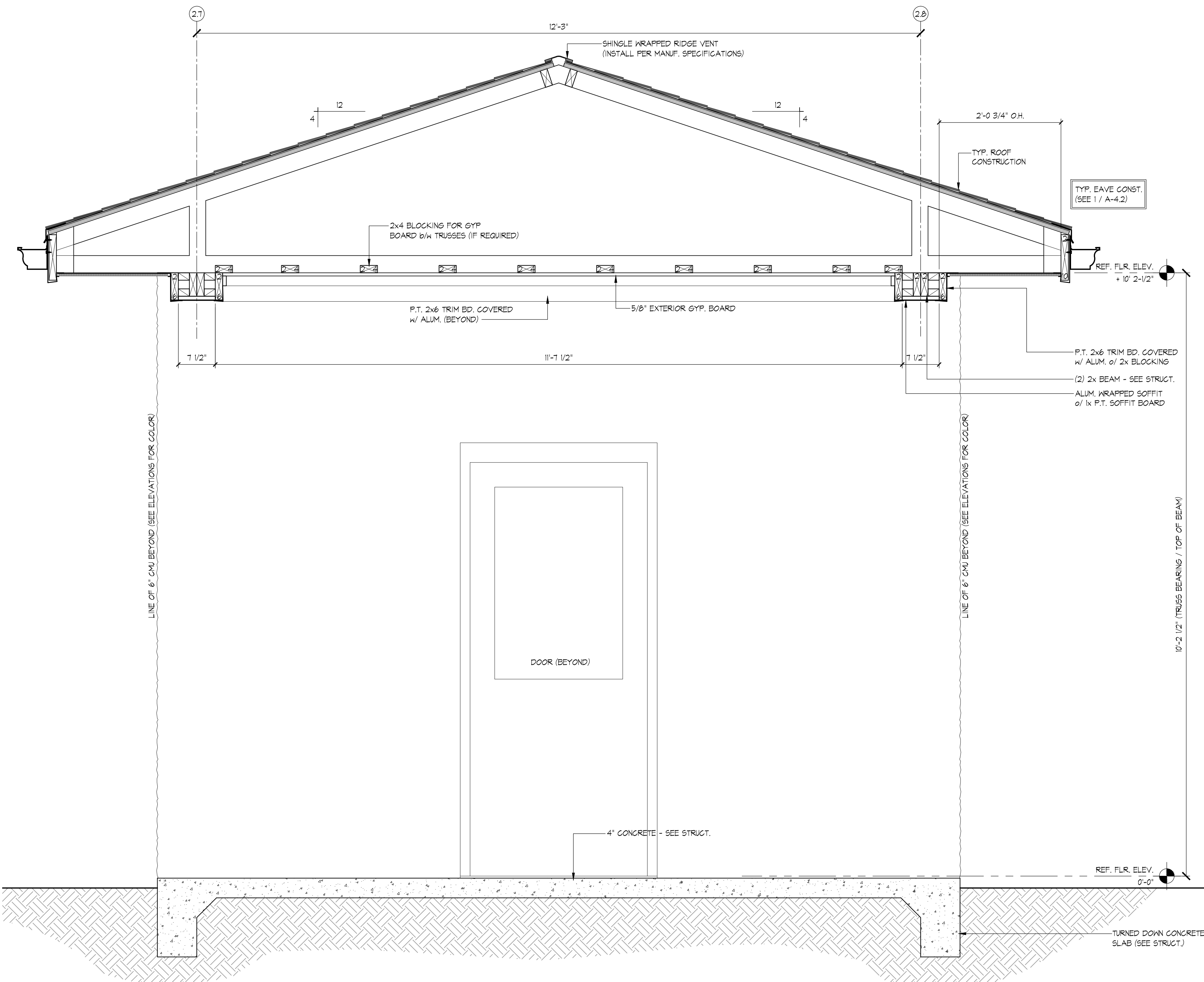
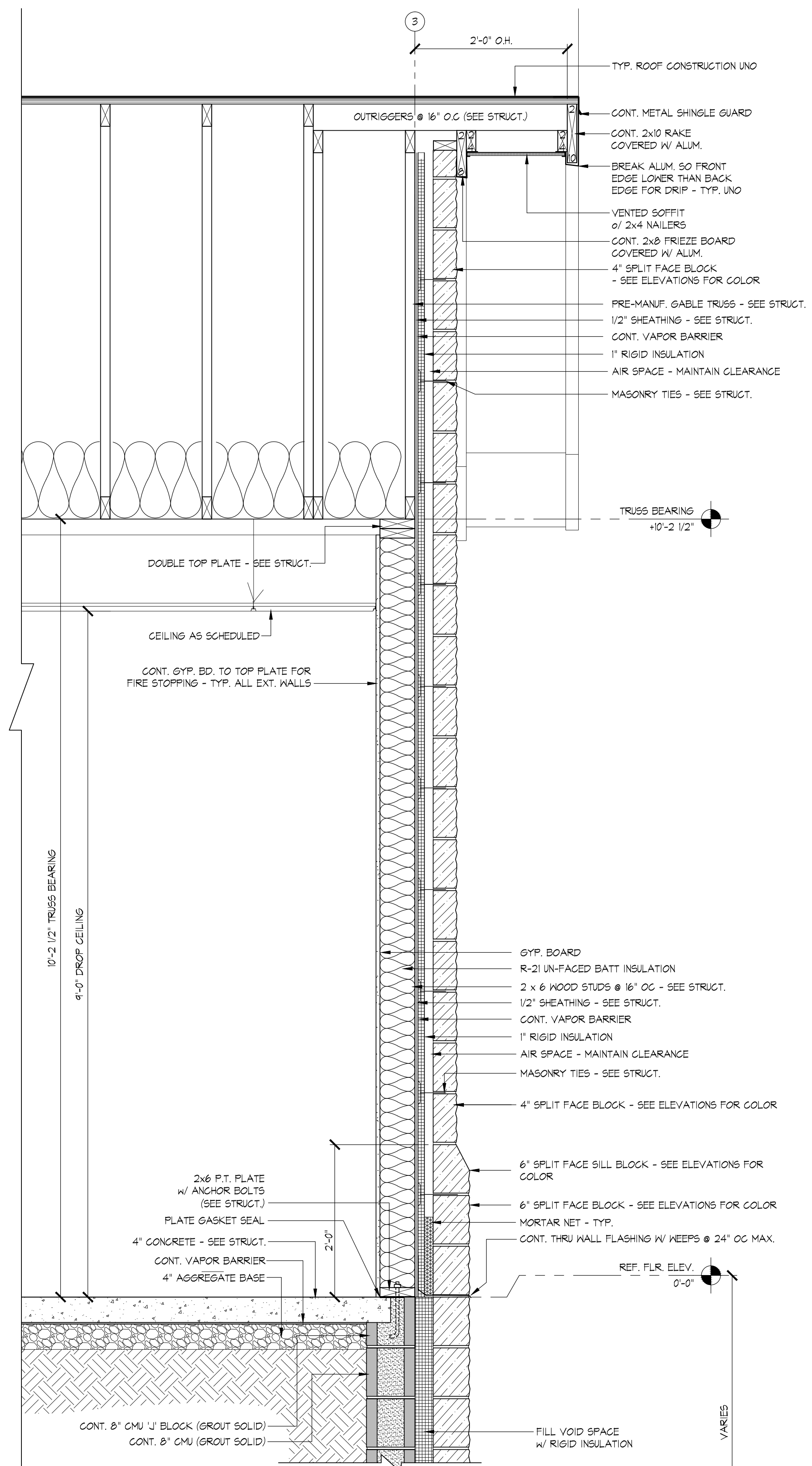


P:\2014\14-190-000 Henrietta EMS and Library\CD's\A-4-1, 4.2, 4.3.dwg, Plotted By: sponder, Plotted: Oct. 07, 2014 - 11:30am



2 COVERED ENTRY SECTION
SCALE: 1"=1'-0"



1 WALL SECTION
SCALE: 1"=1'-0"

SOUTHEASTERN EMS
NEW SOUTHEASTERN EMS
FOR
RUTHERFORD COUNTY

ISSUE DATE: 10-7-2014

REVISION 1: --
REVISION 2: --
REVISION 3: --
REVISION 4: --

PROJECT #: 14-190-000
CONTENT: DETAIL SECTIONS

PROJECT ARCHITECT: --
DRAWN BY: SJP
CADD FILE NAME:

THIS DRAWING AND THE DESIGN SHOWN ARE THE PROPERTY OF ESD. THE REPRODUCTION, OR USE OF THIS DRAWING WITHOUT THEIR WRITTEN CONSENT IS PROHIBITED. ANY INFRINGEMENT IS SUBJECT TO LEGAL ACTION.

Sheet
A-4.4

ESD
architecture • interior design
1300 South Mint Street, Suite 300, Charlotte, NC 28203
Email: esd@esdarch.com • Fax: 704-373-0902 • Phone: 704-373-1900