

ENCLOSED SWITCH AND CIRCUIT BREAKER SCHEDULE

UNIT	LOCATION	TYPE	VOLTAGE	POLES	FRAME/SWITCH	TRIP/FUSE	SC RATING	ENCLOSURE	NOTES
MCB	EXTERIOR WALL	TMCB	208	3	400	300	22KAIC	3R	◆
CBG	GENERATOR	TMCB	208	3	400	300	22KAIC	1	◆
ATS	ELEC./IT 107	ATS	208	4	400	400	22KAIC	3R	

NOTES: ◆ PROVIDE CIRCUIT BREAKER WITH A SERVICE ENTRANCE LABEL.

LEGEND

DISCONNECT TYPES ETCB = ELECTRONIC-TRIP CIRCUIT BREAKER FDS = FUSIBLE DISCONNECT SWITCH MCP = MOTOR CIRCUIT PROTECTOR NFDS = NON-FUSIBLE DISCONNECT SWITCH ST/DS = COMBINATION STARTER/DISCONNECT SWITCH TMCB = THERMAL-MAGNETIC CIRCUIT BREAKER ATS = AUTOMATIC TRANSFER SWITCH C/DS = COMBINATION CONTACTOR/DISCONNECT SWITCH	DISCONNECT ENCLOSURE TYPES 1 = NEMA 1 ENCLOSURE 3R = NEMA 3R ENCLOSURE 4 = NEMA 4 ENCLOSURE 4X = NEMA 4X ENCLOSURE	RACEWAY TYPES EMT = ELECTRIC METALLIC TUBING FMC = FLEXIBLE METAL CONDUIT IMC = INTERMEDIATE METAL CONDUIT LFMC = LIQUID-TIGHT FLEXIBLE METAL CONDUIT PVC = NON-METALLIC PVC CONDUIT RMC = RIGID METAL CONDUIT
--	---	---

EQUIPMENT CONNECTION SCHEDULE

SYM.	EQUIPMENT	LOAD	VOLT/ PHASE	DISCONNECT TYPE	RATING	POLES	TRIP/FUSE	ENCL.	CONDUCTORS	RACEWAY		NOTES
										TYPE	SIZE	
①	CU-1	19.9RLA+1FLA	208/1	FDS	60	2	45	3R	2#8, 1#10G	LFMC	3/4"	
②	MSP-1	7.BRLA+.52FLA	208/1	FDS	30	2	15	3R	2#12, 1#12G	LFMC	1/2"	

LEGEND

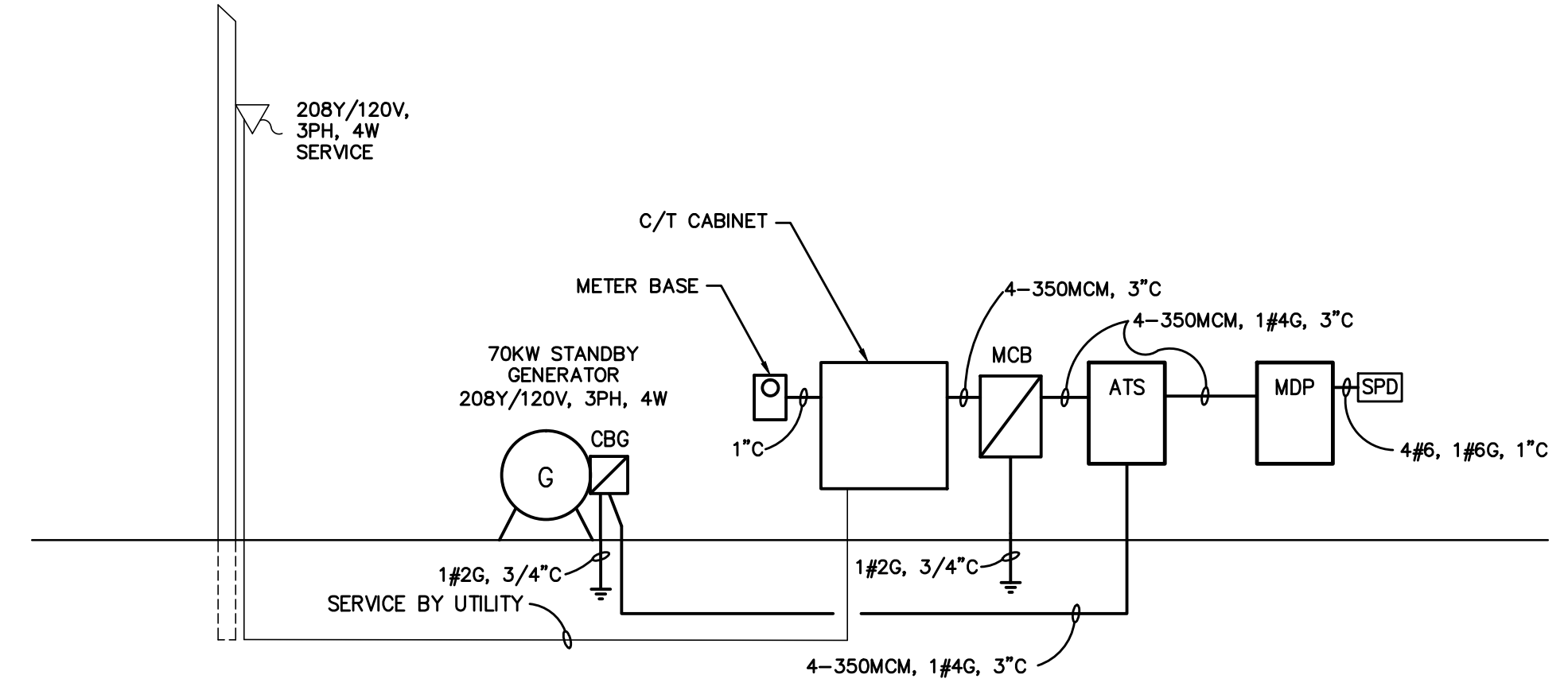
DISCONNECT TYPES ETCB = ELECTRONIC-TRIP CIRCUIT BREAKER FDS = FUSIBLE DISCONNECT SWITCH MCP = MOTOR CIRCUIT PROTECTOR NFDS = NON-FUSIBLE DISCONNECT SWITCH ST/DS = COMBINATION STARTER/DISCONNECT SWITCH TMCB = THERMAL-MAGNETIC CIRCUIT BREAKER TOG = HP RATED TOGGLE SWITCH	DISCONNECT ENCLOSURE TYPES 1 = NEMA 1 ENCLOSURE 3R = NEMA 3R ENCLOSURE 4 = NEMA 4 ENCLOSURE 4X = NEMA 4X ENCLOSURE FNP = FUSE PER NAMEPLATE	RACEWAY TYPES EMT = ELECTRIC METALLIC TUBING FMC = FLEXIBLE METAL CONDUIT IMC = INTERMEDIATE METAL CONDUIT LFMC = LIQUID-TIGHT FLEXIBLE METAL CONDUIT PVC = NON-METALLIC PVC CONDUIT RMC = RIGID METAL CONDUIT	STARTER TYPES CFWVR = COMBINATION FULL VOLTAGE, NONREVERSING	CONTROL DEVICES HOA = HAND-OFF-AUTO RPL = RED PILOT LIGHT AUX = AUXILIARY CONTACTS (2 N.O., 1 N.C.) CTS0 = 50 VA CONTROL TRANSFORMER
---	---	---	--	---

NOTES

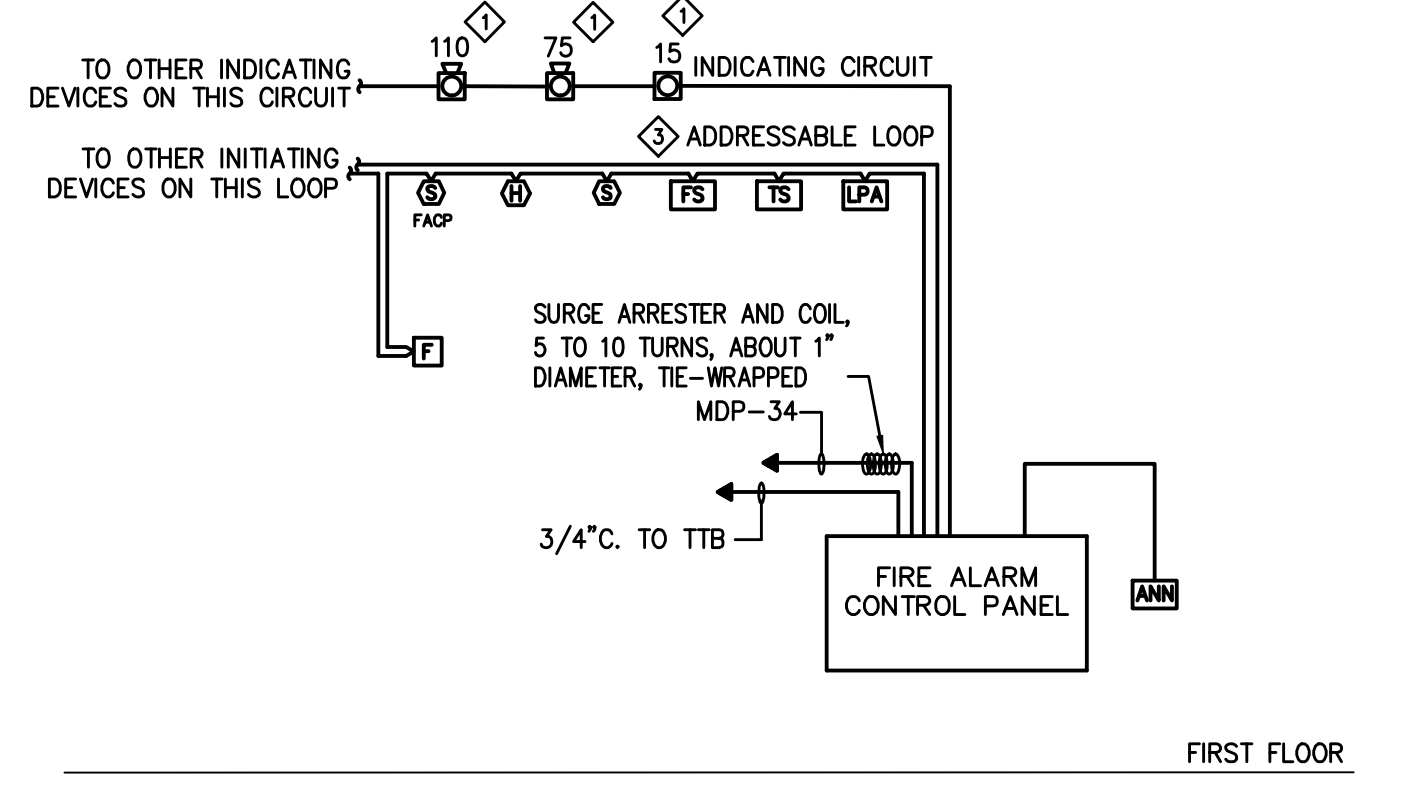
ALL ELECTRICAL CHARACTERISTICS SCHEDULED ABOVE ARE BASED ON INFORMATION AVAILABLE AT THE TIME OF DESIGN. ELECTRICAL CONTRACTOR SHALL VERIFY ELECTRICAL CHARACTERISTICS OF ALL EQUIPMENT WITH EQUIPMENT SUPPLIER(S) PRIOR TO ROUGHING, AND SHALL VERIFY EXACT LOCATION AND EXACT TYPE OF CONNECTION. ALL EQUIPMENT SHALL BE PROPERLY AND SECURELY GROUNDED. ANY SIGNIFICANT CHANGES IN LOCATION, ELECTRICAL REQUIREMENTS, OR TYPE OF CONNECTION REQUIRED FOR ANY EQUIPMENT SCHEDULED ABOVE SHALL BE BROUGHT TO THE ATTENTION OF THE ENGINEER IN WRITING PRIOR TO PROCEEDING.

CONDUCTORS AND RACEWAY SPECIFIED IN THE ABOVE SCHEDULE ARE FOR FINAL CONNECTION TO UNIT AND SHALL BE EXTENDED FROM THE DISCONNECT SHOWN ON THE FLOOR PLANS TO THE EQUIPMENT TERMINATION BOX.

CONDUIT AND BOXES REQUIRED FOR EQUIPMENT CONNECTIONS SHALL BE INSTALLED IN SUCH A WAY AS TO NOT COVER UP EQUIPMENT NAMEPLATES, SERVICE AREAS, AIR FLOW AREAS, ETC.

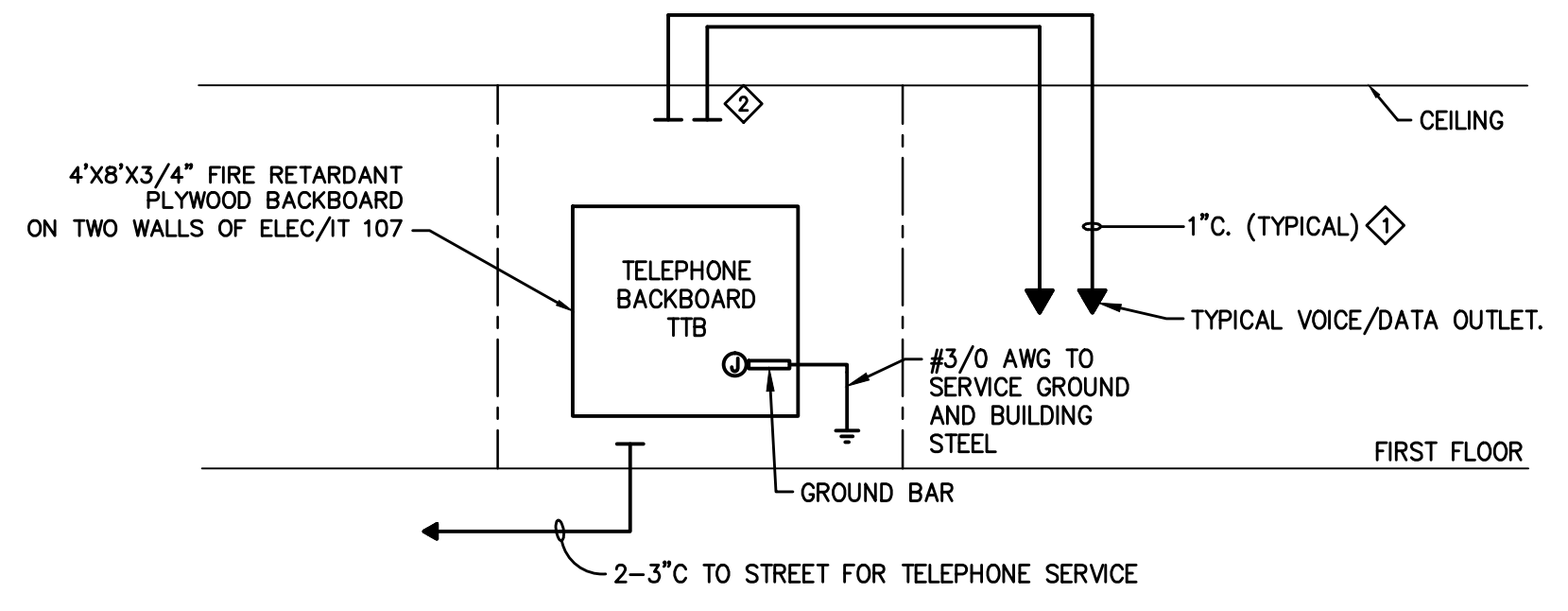


1 POWER RISER DIAGRAM
E4.1 NOT TO SCALE



2 FIRE ALARM RISER DIAGRAM
E4.1 NOT TO SCALE

- NOTES:
- ◆ SUB-SCRIPT INDICATES THE CANDELLA RATING OF THE STROBE UNIT CONTAINED IN THE FIRE ALARM INDICATING DEVICE.
 - ◆ NOT USED.
 - ◆ CONNECT DEVICES INDICATED TO THE SAME FIRE ALARM SIGNAL LOOP. LOOP NUMBER INDICATES DESIRED QUANTITY AND GROUPING OF FIRE ALARM DEVICES.
 - ◆ ROUTE ALL CABLE IN CONDUIT.
 - ◆ SMOKE DETECTORS SHALL NOT BE LOCATED IN DIRECT AIR FLOW NOR CLOSER THAN 3 FEET FROM AN AIR SUPPLY DIFFUSER.



3 TELECOMMUNICATIONS RISER DIAGRAM
E4.1 NOT TO SCALE

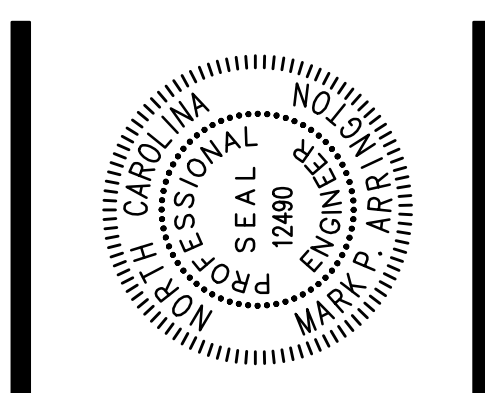
- NOTES:
- ◆ CABLING BY OTHERS.
 - ◆ TERMINATE WITH PLASTIC BUSHING.

LOAD DESCRIPTION	PANELBOARD: MDP												GROUND BUS				SC RATING: 22 KAMPS RMS SYMM.
	WIRE	BKR	CONNECTED LOAD (KVA)			BKR	WIRE	LOAD DESCRIPTION	SERVICE: 208Y/120V 3PH 4W				MOUNTING: SURFACE				
			A	B	C				MAINS: 400 AMP MLO TYPE: BRANCH ENCL.: SURFACE ENCLOSURE: NEMA 1								
WIRE	BKR	CTK	NEUT	A	B	C	CTK	BKR	WIRE	LOAD DESCRIPTION							
EF-1, EF-2	12	20/1	1A	0.4	0.4	1.0	1.0	2A	20/1	12	LIT: BAYS						
VF-1	12	20/1	3B	1.2	1.0	1.2	1.0	4B	20/1	12	LIT: BAYS						
CU-1	8	45/2	5C	1.0	2.4	1.0	1.0	6C	20/1	12	LIT: BAYS						
MSP-1	12	15/2	8B	1.5	1.5	0.9		8A	20/1	12	LIT: BEDROOMS						
	12	/	11C	1.1	1.1	0.9	0.9	10B	20/1	12	LIT: DAY ROOM						
WASHING MACHINE	12	20/1	13A	1.5	1.5	0.7	0.7	12C	20/1	12	LIT: MEETING						
DRYER	10	30/2	15B	1.1	2.5	1.1		14A	20/1	10	LIT: EXTERIOR						
	10	/	17C	1.1	2.5	1.1		16B	20/1	12	REC: BEDROOM						
HOT BOX HEATER	12	20/1	19A	1.5	1.5	1.1		18C	20/1	12	REC: BEDROOM						
AIR COMPRESSOR	12	20/1	21B	1.9	1.1	1.9		20A	20/1	12	REC: BEDROOM						
MICROWAVE	12	20/1	23C	0.9	1.2	1.5		22B	20/1	12	REC: BEDROOM						
REFRIGERATOR	12	20/1	25A	0.9	0.5	0.5		24C	20/1	12	REC: DAYROOM						
ITB	12	20/1	27B	0.2	1.0	0.2		26A	20/1	12	REC: DAYROOM						
ITB	12	20/1	29C	0.2	1.0	0.2		28B	20/1	10	REC: KITCHEN						
CORD REELS	10	30/1	31A	2.0	2.0	0.9	0.9	30C	20/1	12	REC: KITCHEN						
CORD REELS	10	30/1	33B	2.0	2.0	0.5	0.5	32A	20/1	12	REC: MEETING						
CORD REELS	10	30/1	35C	2.0	2.0	0.2	0.2	34B	20/1	12	REC: MEETING						
CORD REELS	10	30/1	37A	2.3	2.0	1.5	1.5	36C	20/1	12	WH-1 CONTROLS						
REC: BAYS	10	20/1	39B	0.9	0.8	0.9	0.5	38A	20/1	10	GEN: JACKET WH						
REC: BAYS	10	20/1	41C	0.3	0.3	0.7	0.7	40B	20/1	10	GEN: BATT. CHARGER						
GF-1	12	20/1	43A	0.8	1.5	1.5		42C	20/1	10	GEN: REC. & LIGHT						
IR-1	12	20/1	45B	1.5	0.3	1.5		44A	20/1	12	OVERHEAD DOOR						
SPARE	20/1	47C	0.0	0.0	0.0	0.0		46B	20/1	12	OVERHEAD DOOR						
TREADMILL	12	20/1	49A	1.0	1.0	1.5	1.5	48C	20/1	12	OVERHEAD DOOR						
RANGE	8	50/2	51B	0.5	6.0	0.5		50A	20/1	12	OVERHEAD DOOR						
SPARE	20/1	53C	0.4	0.0	0.4	0.0		52B	20/1	12	DISHWASHER						
SPARE	20/1	55A	0.0	0.0	0.0	0.0		54C	20/1	12	CAMERAS						
SPARE	20/1	57B	0.0	0.0	0.0	0.0		56A	20/1	12	SPARE						
SPARE	20/1	59C	0.0	0.0	0.0	0.0		58B	20/1	12	SPARE						
SPARE	20/1	61A	0.0	0.0	0.0	0.0		60C	20/1	12	SPARE						
SPARE	20/1	63B	0.0	0.0	0.0	0.0		62A	/3		SPACE ONLY						
SPARE	20/1	65C	0.0	0.0	0.0	0.0		64B	/								
SPACE ONLY	/3	67A	0.0	0.0	0.0	0.0		66C	/								
		69B		0.0	0.0	0.0		68A	80/3	6	SPD						
		71C		0.0	0.0	0.0		70B	/	6							
				0.0	0.0	0.0		72C	/	6							
				1.1													
41.8 22.8 24.1 24.3																	

NOTES:

LIGHTS	7.0 KVA
RECEPTS	8.8 KVA
MOTORS	21.2 KVA
HEAT	20.0 KVA
KITCHEN	0.0 KVA
CMPTTR	0.0 KVA
OTHER	13.1 KVA
TOTAL	70.1 KVA

McKNIGHT-SMITH WARD • GRIFFIN ENGINEERS, INCORPORATED
 1300 South Mint Street, Suite 300, Charlotte, NC 28203
 Phone: 704-373-0902 • Fax: 704-373-1900
 Email: esd@esdarch.com



SOUTHEASTERN EMS
NEW SOUTHEASTERN EMS FOR RUTHERFORD COUNTY

ISSUE DATE: 10-7-14

REVISION 1: _____

REVISION 2: _____

REVISION 3: _____

REVISION 4: _____

PROJECT #: 14-190-000

CONTENT: _____

PROJECT ENGINEER: MPA

DRAWN BY: MHK

CADD FILE NAME: _____

THIS DRAWING AND THE DESIGN SHOWN ARE THE PROPERTY OF ESD. THE REPRODUCTION, OR USE OF THIS DRAWING WITHOUT THEIR WRITTEN CONSENT IS PROHIBITED. ANY INFRINGEMENT IS SUBJECT TO LEGAL ACTION.

Sheet
E4.1